



# Virtual Interior Design

*Same approach, one room at a time.*

Studio-led interior design, delivered virtually to homes across the UK and worldwide. No compromises on quality. No need to be in London. Just considered, beautiful rooms designed entirely around you.



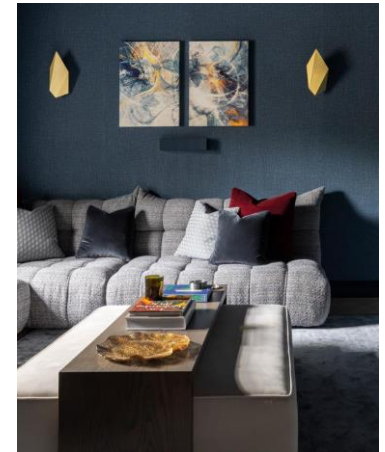
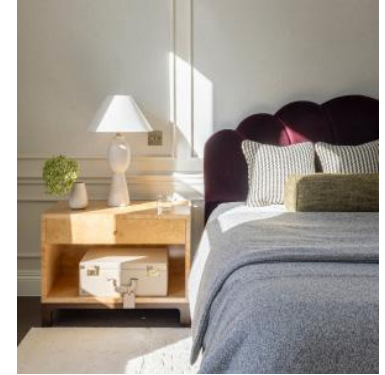
# Why Project London?

Project London is a London-based architecture, interior design and project management studio. Our Virtual Interior Design service is an accessible and flexible way to work with the studio, wherever you are in the world.

What you receive is not a template. It is a bespoke considered interior design, developed using the same creative process, sourcing standards and attention to detail behind some of London's most refined residential projects.

What makes us different;

- Every project is directed by the studio, not outsourced, not templated
- Access to the same trusted suppliers and considered sourcing approach
- A structured process with clear deliverables, so you always know what to expect
- Preferred supplier rates passed on where available, through your design pack
- Two price points on every item, for flexibility without compromise



# Our process.

Six steps. One cohesive design. Everything you need to transform your space.



0 1

## Tell us about your space

Start by completing our design questionnaire. Share inspiration imagery and lifestyle priorities. The more you tell us, the better we can tailor the design.



0 2

## Consultation call

A 45-minute video call where we explore your space, your lifestyle and your aesthetic vision in detail. This is the conversation that shapes everything that follows.



0 3

## Design development

This is where the studio gets to work, planning your space, choosing materials, curating furniture and lighting selections.



0 4

## Design pack

Your complete design pack is shared for review



0 5

## Review changes

We talk through the design together and refine where needed



0 6

## Final design pack

Your design pack includes sourcing links, specification detail and two price points per item – ready to implement at your own pace.

# Our packages.

Three levels of studio support. Not sure which is right for you? Start with a Design Discovery and we will guide you from there.



01

## Design Discovery

*£300 inc. VAT*

A focused one-to-one consultation giving real clarity before you commit. Creative direction, material guidance and a confident plan for your space. Ideal for expert input on a room, a second opinion, or direction before tackling a project independently.



02

## Curated Room Design

*from £900 inc. VAT per room*

A fully designed room, considered, resolved and ready to shop. We do the creative work; you implement at your own pace, with a curated shopping list and direct links for every piece. Ideal if you want an elevated interior without full spatial planning.



03

## Signature Room Design

*from £1,560 inc. VAT per room*

The complete studio experience. Every layer resolved – layout, sourcing, specification, styling, window treatments and space planning – finished to the Project London standard, with full studio support.



We have been featured in publications including.....

Livingetc

HOMES  
& GARDENS

The  
Guardian

VOGUE  
LIVING

COUNTRY & TOWN  
HOUSE COUNTRY LIFE

HOUSE  
& GARDEN

KITCHENS  
BEDROOMS &  
BATHROOMS

And with awards from.....





V I R T U A L   I N T E R I O R   D E S I G N

---

WWW.PROJECTLONDON.CO.UK

+44 20 3488 6982

INFO@PROJECTLONDON.CO.UK